



UNIQUE AS YOU ARE

JAN
KATH



“I WANT TO CREATE THE ANTIQUES OF TOMORROW...”

...is the declared goal of Jan Kath. The German-born designer is internationally recognized for his trendsetting carpet designs. He fearlessly combines classic elements with minimalist design, radically breaking old visual rules, and has revolutionized the world of carpets. His collections have won awards, such as the Red Dot and the Carpet Design Award and have long been featured in renowned museums. The “Rug Bombs” series was first displayed at Documenta 15 in Kassel, then traveled to the Bangkok Art Biennale in Thailand and finally to the Museum Rijswijk in the Netherlands.

Jan Kath has a deep, emotional connection to traditional craftsmanship. “I essentially grew up on carpets,” he says. His grandfather traded in high-quality carpets; later, his father, Martin Kath, took him on buying trips to the vibrant markets and bazaars of Tehran, Istanbul, and Tabriz. “This sharpened my eye and

developed my basic understanding of color combinations and proportions.” However, the transition from trading to creating was not planned. On the contrary, in his early twenties, Jan Kath packed his backpack and embarked on a road trip through India to find his “own way”. After a year of traveling, he ended up in Kathmandu, where he coincidentally ran into an old business associate of his father’s on the street. A meeting that changed everything – the connection to carpets was reestablished. Instead of returning home, Jan Kath took a job as a quality inspector in Nepal, gaining further experiences in the industry. A few years later, he took over the manufacturing himself and began to design his own creations. “It was not an easy learning process. Far from everything that looks good on paper works in textiles. But when I decided to trust my own ideas and implement them consistently, success followed.”





REGARDING QUALITY— UNCONDITIONALLY TRADITIONAL

From Vienna to London, Paris, Milan, extending to Kuwait, Beirut, Beijing and Sydney, Jan Kath carpets are now sold worldwide. With exclusive showrooms in Berlin, Cologne, New York, and Vancouver. His clientele includes numerous rock stars, authors, monarchs and Hollywood actors. Jan Kath also outfits boutiques of major Italian and French fashion houses such as Fendi and Saint Laurent across the globe.

However, Jan Kath is convinced that the secret to his success lies not only in the design. "It's the craftsmanship that elevates the design, transforming a successful template into something extraordinary," he says. "That's why it's important to me to promote old traditions and contribute to keeping this cultural heritage alive." When it comes to quality, the designer describes himself as "uncompromisingly conservative."

Employing methods that have hardly changed over the centuries, Jan Kath carpets are hand-knotted, knot by knot, in small work-

shops primarily in Kathmandu (Nepal), Agra (India), and the High Atlas Mountains (Morocco). Partly due to his personal history, he feels a close connection with the people in the carpet-producing countries. "The Asian continent has profoundly influenced me," says Kath. "I have been at home in northern Thailand and Kathmandu for many years now."

For this reason, Jan Kath regards good working conditions as more than a moral obligation they are an absolute necessity. The entire carpet supply chain is monitored by the Swiss fair-trade organization, Label STEP. Independent staff regularly visit the workshops to check working conditions and environmental standards on-site. "In my view, both are essential for the future of our small family business," says Kath. "Because only if we keep carpet knotting attractive as a profession we will have the best employees in the coming years. And we need them, as my designs are incredibly complex and their realization requires a lot of know-how and great passion."

HIGHLAND WOOL FOR A GOOD INDOOR CLIMATE

It's not just the individual handwork that makes each carpet unique. The hidden gem of Jan Kath's designs is the wool, particularly the Tibetan highland wool. This wool is among the most valuable and robust in the world. The sheep in the Himalayas are exposed to harsh climatic conditions at high altitudes, resulting in their fleece developing a very high fat content (lanolin) and being particularly long-fibered and elastic, providing the carpets with a natural protection against dirt. Healthy wool lives and breathes; storing moisture and releasing it in dry indoor air, creating a balance. This makes a wool carpet antistatic and promotes a comfortable indoor climate.

To preserve and enhance the uniqueness of the wool, Jan Kath has the raw material combed and spun by hand. This process keeps the material coarser and its surface more irregular, leading to the varying absorption of dye pigments. When this particularly vibrant wool is then knotted, it results in color variations, known as "Abrash" – a special quality criterion of handmade carpets. The finest Chinese silk adds charming light reflections

to the textiles. This natural "endless fiber" is manually unwound from cocoons and then twisted. Although it is possible to produce any Jan Kath design entirely in silk, resulting in an elegant, lustrous and even carpet, the patterns become very intriguing when there is a deliberate combination of materials.

These include, besides Chinese silk and Tibetan highland wool, the Nepalese nettle. "Allo" is a very special natural product resulting in an expressive depth and a robust feel. The Allo-Susni plant grows in the Himalayas at altitudes between 900 and 2,500 meters, often in hard-to-reach areas. Local mountain farmers harvest the plants and bring them to their villages to dry. A few days later, the bark is stripped from the stems and boiled in an ash wood barrel. After two to three hours in water, the fiber is beaten with a wooden hammer, loosened and then laid out to dry in the sun. To achieve a special bright shine, the nettle is then again immersed in a mixture of water and white clay, cleaned by hand. Once the fibers have softened, they are spun into a coarse yarn.

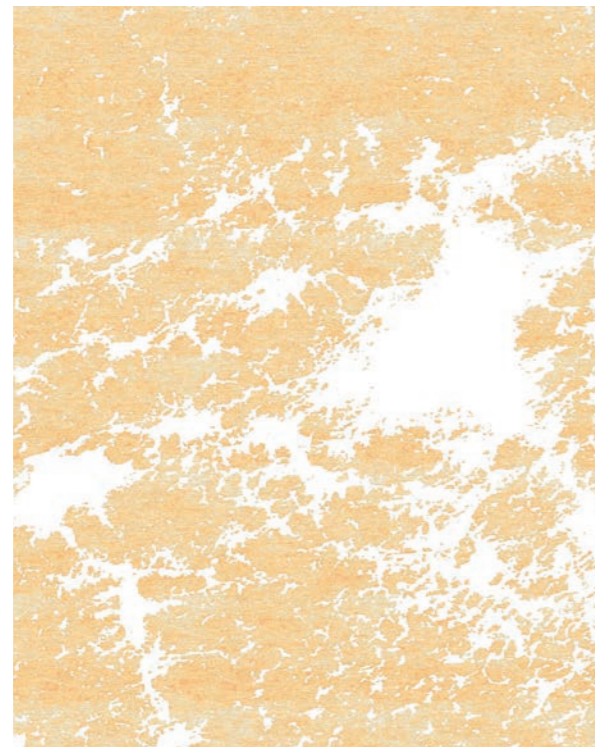


MOTHER



TABRIZ CANAL
navy blue

EFFECT



AERIAL
dirty white

LAYER BY LAYER



ERASED HERITAGE
TABRIZ CANAL AERIAL
navy blue / dirty white
wool, silk

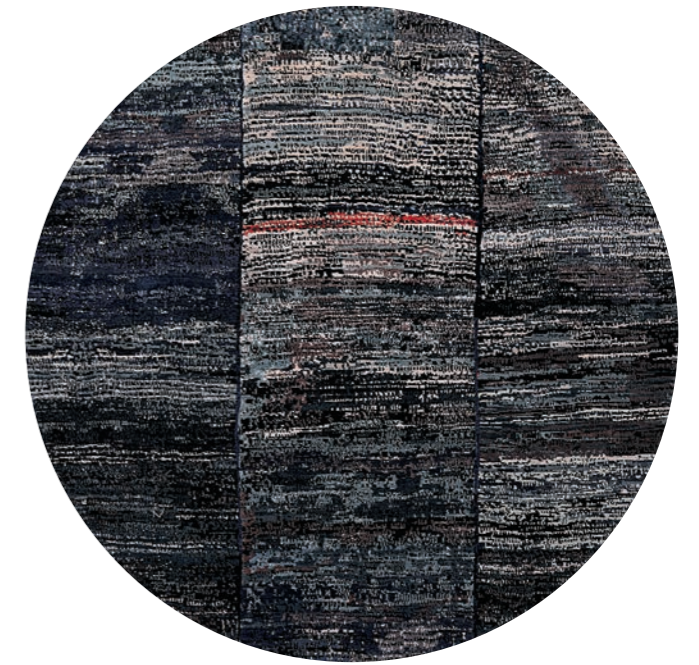
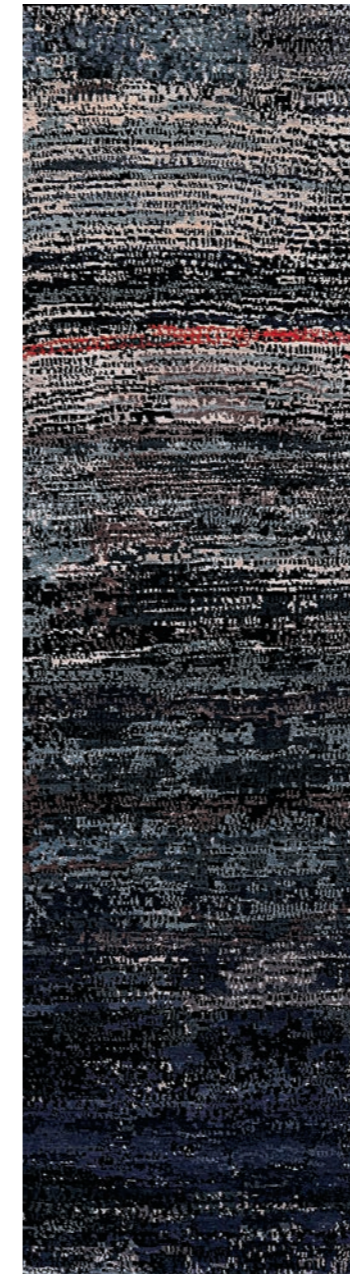
LIMITLESS SHAPES



DRESS 6
blue black
wool, silk

A runner for the hallway? An oval under the dining table, or perhaps a room-filling wall-to-wall solution? All parameters of a carpet can be individually customized. This applies not just to colors, materials and design,

but also to shape and size. In the factories in Kathmandu, Jan Kath operates one of the largest looms in Asia, where carpets up to the size of 10.5 x 15.5 meters are hand-knotted.

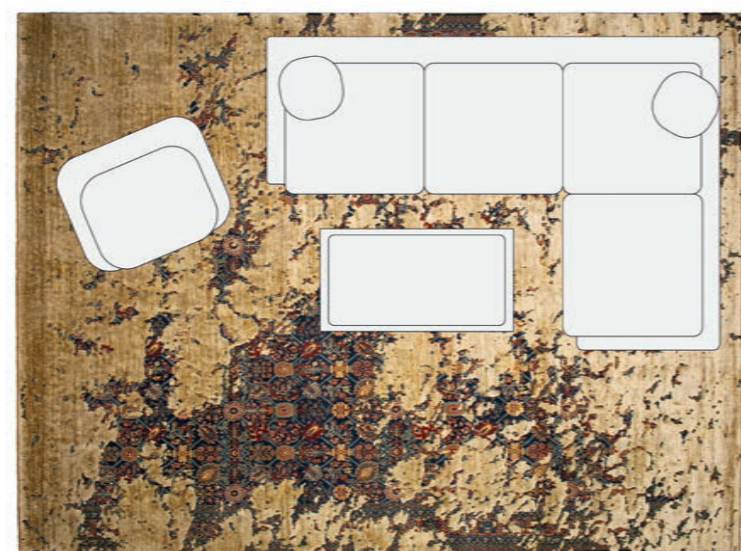




170 CM x 240 CM



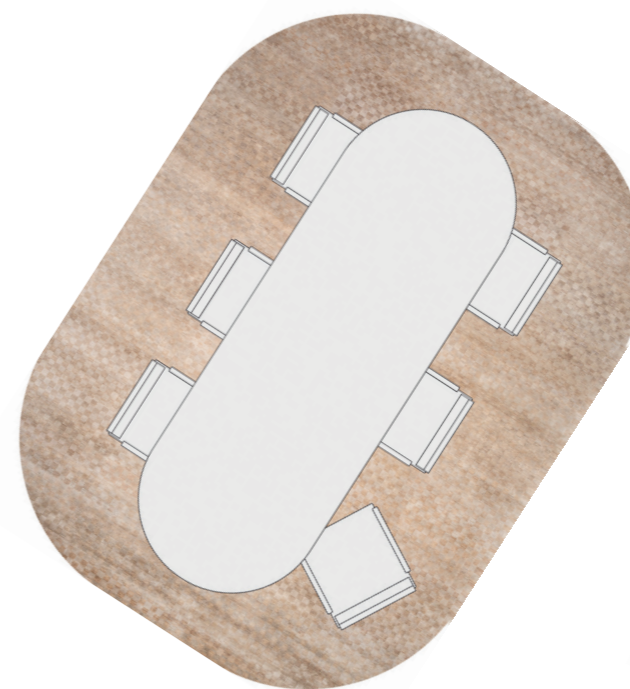
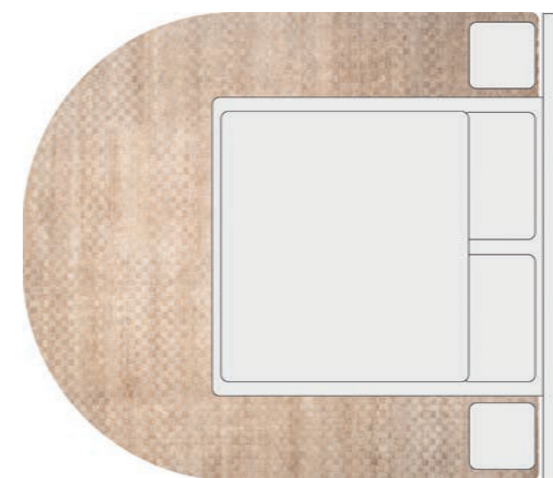
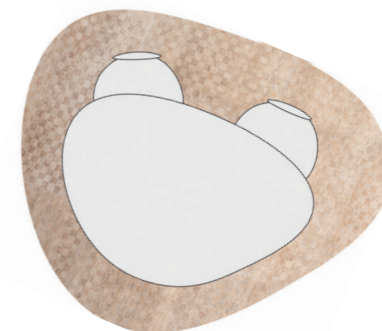
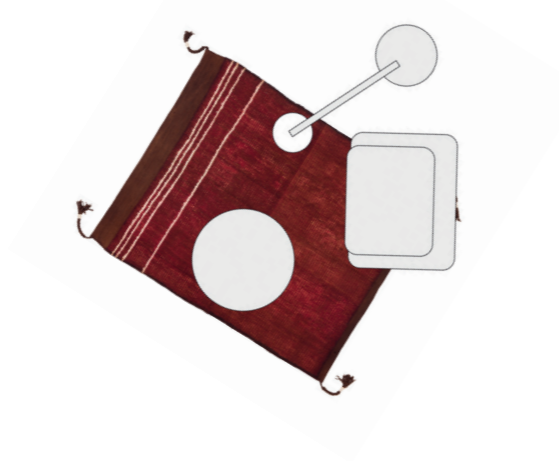
250 CM x 300 CM



300 CM x 400 CM

IN ANY SIZE

FOR EVERY ROOM



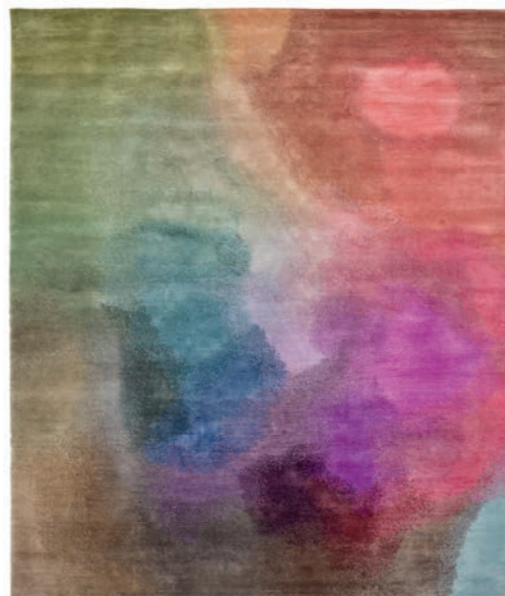
SPECTRUM



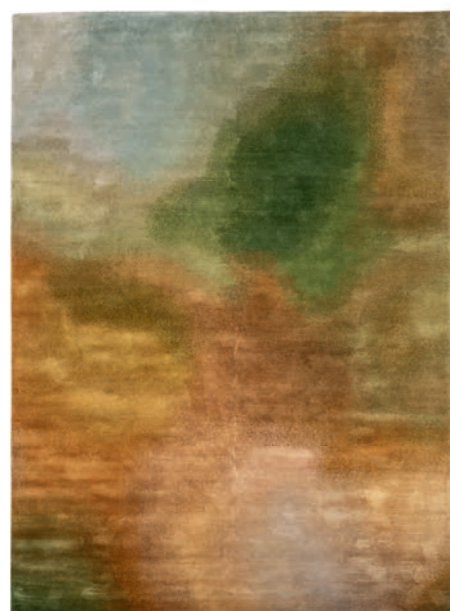




FAM
green, orange, purple



TENNO
orange, purple



NARVIK
olive, orange



ODDA
pink, purple



NARVIK
*blue, green
wool, silk*

The play of colors of the Northern Lights in the sky over Siberia inspired Jan Kath to create his SPECTRUM collection. The flowing gradients, with bright colors blending into each other, project a fascinating, playful lightness onto the floor. The textile repro-

duction of the images demands the highest level of craftsmanship. Over months of work, the weavers implement the template, ultimately making the fleeting sky images tangible in thousands of knots made of wool and silk.

AZER PULSE



Photographer
BENNI JANZEN

Architecture and Interior
NICOLE MAALOUF

Location
SOLEBEICH,
MUNICH
GERMANY

Collection
AZER PULSE

Displayed Rug
AZER PULSE HERIZ 64



AZER PULSE HERIZ 64
burgundy, dark blue
wool, silk

Carpets have always been an expression of the cultural identity of the people who made them. Numerous styles, such as the geometric Heriz with their extensive patterns, have developed over time. In the AZER PULSE collection, Jan Kath revives

these designs from the northwest Persian region of Bakhshayesh in the Greater Caucasus. These designs are adapted to contemporary times in vibrant colors using highland wool and silk, resulting in a robust quality.



AZER PULSE HERIZ 15
turquoise , purple



AZER PULSE HERIZ 15
burgundy , orange



AZER PULSE HERIZ 147
pink , violet



AZER PULSE HERIZ 64 SKY
light blue , pink / gold



AZER PULSE 147 FRAME
pink , violet / gray



AZER PULSE HERIZ 147 RAVED
orange , blue / beige



AZER PULSE HERIZ 138 SKY
dark blue , violet / neon pink



AZER PULSE HERIZ 138
orange , red



AZER PULSE HERITZ 147 DOUBLE SKY
red , burgundy / red



AZER PULSE HERIZ 64
burgundy , dark blue / gold
wool , silk



HEITER BIS WOLKIG



CLOUD 2
blue gray



CLOUD 7
purple



CLOUD 1
blue



CLOUD 5
blue

The sky at your feet! The works of German Baroque painters from the 16th and 17th centuries served as a model for the HEITER BIS WOLKIG collection. In the domes of splendid churches, these artists captured a piece of the idealized sky.

Also the Dutch masters and their archaic sea battles captured in oil inspired Jan Kath. Although the celestial conditions depicted are dramatic, the carpets never feel obtrusive, but rather soothe the eye and the soul.

EAST





GRASS



red, copper



yellow, copper



teal blue, copper



turquoise, dark gray



red, red



pink, dark gray



sea green, copper

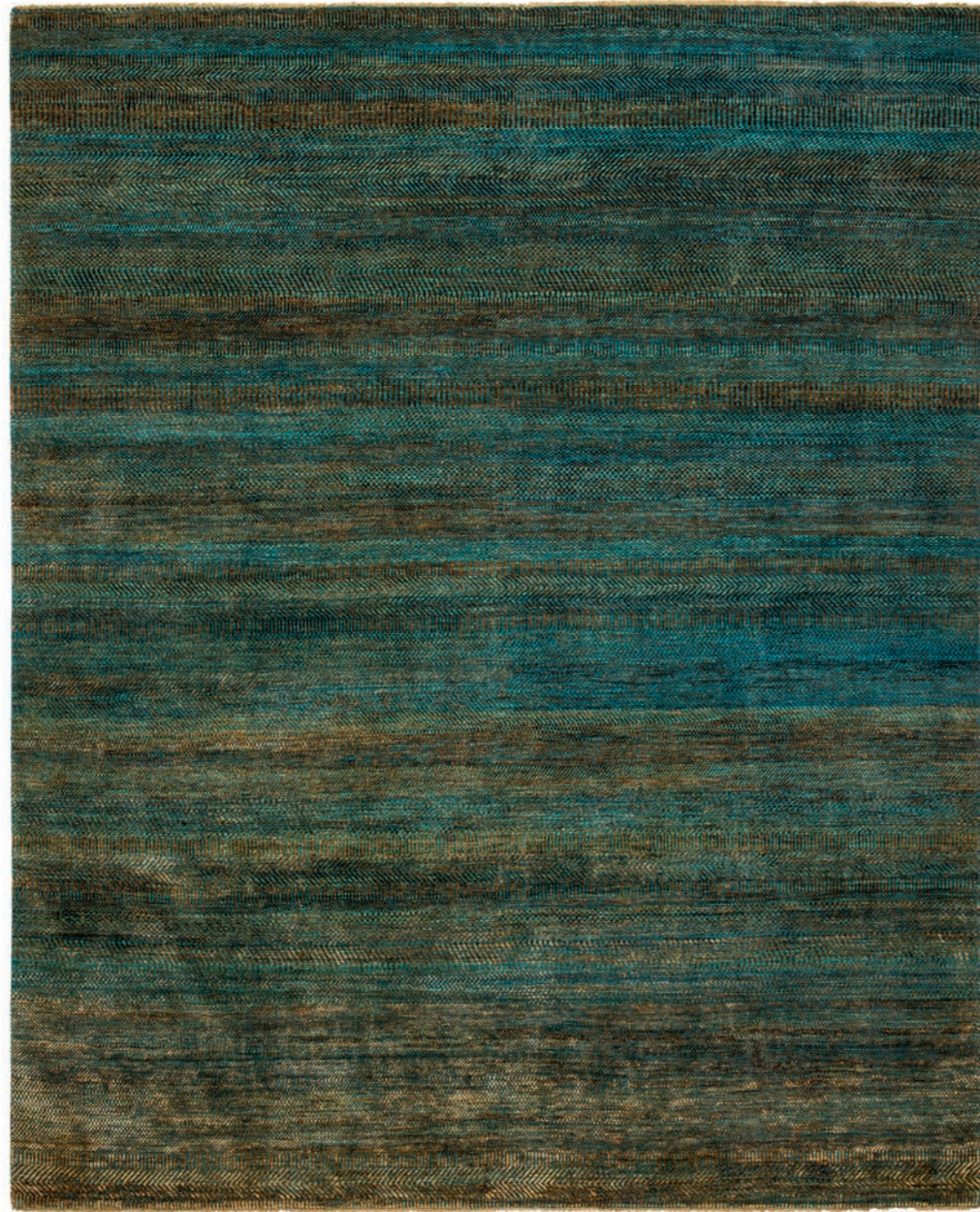


pink, copper



beige, dark gray





GRASS
turquoise, copper
wool, silk

The vast lands of Anatolia often form the backdrop for the rural motifs of Turkish rugs, where broad, horizontal lines suggest grasslands and grain fields. Jan Kath has adopted this idea in the GRASS collection and developed a contemporary, rhythmic

pattern. The carpets, produced in numerous base colors, blend into modern environments. At the same time, they convey the vibrancy and originality of nature, which becomes tangible through the deliberate interplay of wool and silk.

Photographer
BENNI JANZEN

Architecture and Interior
NICOLE MAALOUF

Location
PRIVATE HOUSE,
TAUFKIRCHEN,
GERMANY

Displayed Rug
GRASS



ERASED HERITAGE



Photographer
ASSEN EMILOV

Architecture and Interior
GERORGI KATOV/
I/O ARCHITECTS

Location
PRIVATE HOUSE,
KASANLAK,
BULGARIA

Displayed Rug
BIDJAR HIGHGATE ENJOY



BIDJAR HIGHGATE ENJOY
red / gray
wool, silk

Egyptian Mamluks, Iranian Shiraz, Turkish Konyas... In the carpets of the Erased Heritage collection, Jan Kath revives traditional knotting patterns in their original colors. The ornaments are given a contemporary twist through distortion effects like a tangle of lines or clouds that appear to grow out of the clas-

sic patterns. The modern elements are knotted in silk and reflect light brighter than the hand-spun wool used for the classic patterns. The antique finishing process, only done in the production in Agra, creates a high-low effect differently from the Nepalese carpets, changing the texture and look of the rug.



POLONAISE GREENFORD ROCKED
beige / copper wire



TABRIZ CANAL AERIAL
navy blue / dirty white



TABRIZ FASHION ARTWORK 8
brown / orange



KIRMAN JUNGLE SKY
white / blue



JARDIN DE PARIS BLOTTED
green / neon pink
wool, silk



LOST WEAVE 1
blue



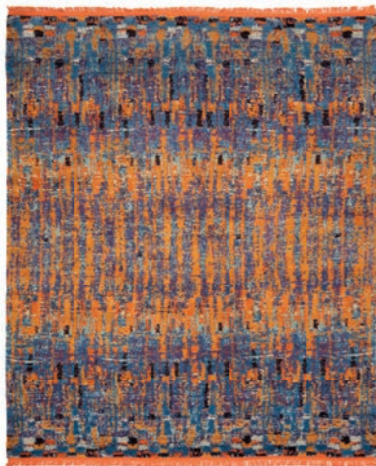
LOST WEAVE 2
multicolor



LOST WEAVE 4
multicolor



LOST WEAVE 8
multicolor



LOST WEAVE 9
multicolor



LOST WEAVE 12
multicolor



LOST WEAVE 14
dark purple



LOST WEAVE 6
turquoise



LOST WEAVE 20
multicolor



LOST WEAVE

Photographer
BENNI JANZEN

Architecture and Interior
NICOLE MAALOUF

Location
PRIVATE HOUSE,
TAUFKIRCHEN,
GERMANY

Collection
LOST WEAVE

Displayed Rug
LOST WEAVE 14



Lost weave 14
silver gray
wool, silk

Jan Kath found the inspiration for LOST WEAVE in the High Atlas Mountains of Morocco. As more nomads settled down in the 1960s, wool prices rose. Out of necessity, Berber women began making rugs from

recycled clothing for their private homes. Jan Kath has adapted fragments of these so-called "Boucherouite" and has them knotted in Tibetan highland wool, silk and nettle fiber using the loose "Wangden" knot.

Photographer
YE RIN MOK

Architecture and Interior
URSULA
SEEBA-HANNAN

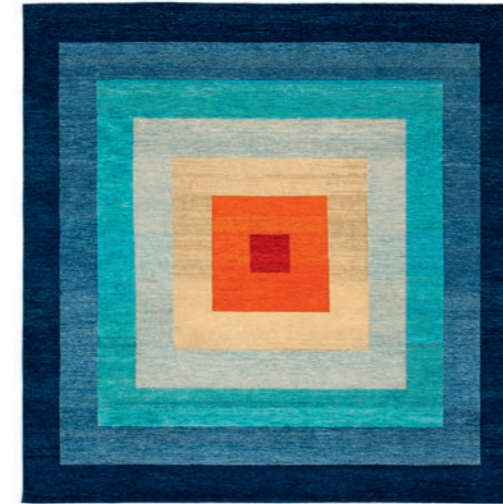
Location
THOMAS MANN HOUSE,
LOS ANGELES,
USA

Collection
YANTRA

Displayed Rug
YANTRA 5 BORDER



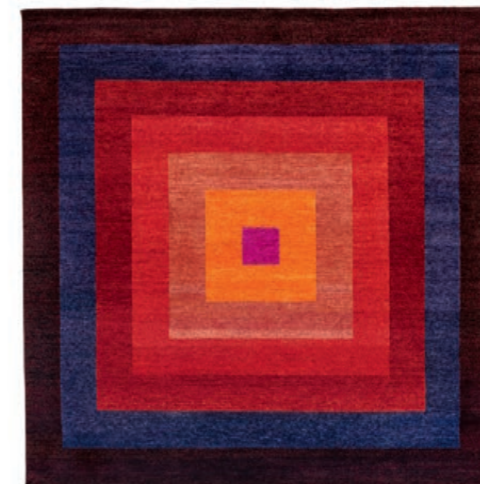
YANTRA



YANTRA 7 BORDER
blue, orange



YANTRA 6 BORDER
brown, turquoise



YANTRA 7 BORDER
purple, red



YANTRA 5 BORDER
red, blue

The Greek philosopher Plato called the square "perfectly beautiful in its symmetry." In many cultures and religions around the world, this shape plays a special role. This includes the Hindu meditation images — the Yantras. In the collection, bearing the name Yantra, various colored squares are nest-

ed within each other, so that the rug defines the center of any room. This clear YANTRA design achieves its full, visually captivating effect even at a lower knot density. It is knotted in 80 knots per square inch, making it more affordable while maintaining Jan Kath's commitment to quality.

FROM RUSSIA WITH LOVE



Photographer
MARK SERYY

Architecture and Interior
B- ARCH
LOCATED IN PRATO

Location
BIG WINE FREAKS,
MOSCOW,
RUSSIA

Collection
FROM RUSSIA WITH LOVE

Displayed Rug
JANKA SPLASHED



JANKA SPLASHED
dark brown / green
wool, silk, nettle

It is a tribute to folklore. In his collection FROM RUSSIA WITH LOVE, Jan Kath brings to life magnificent roses and lush floral wreaths. He first encountered these motifs in his early twenties during a journey on the Trans-Siberian Railway. "I was traveling to Mongolia,

sharing a compartment with two ladies wearing colorful headscarves who served me tea," he recalls. On the carpets, the patterns are executed in rich, vibrant colors, and the extra thick pile along with the pure silk fringes emphasize their opulence.

Photographer
BENNI JANZEN

Architecture and Interior
NICOLE MAALOUF

Location
**PRIVATE HOUSE,
MUNICH,
GERMANY**

Collection
BORO

Displayed Rug
BORO 10



BORO



BORO 10
light gray
wool, silk, nettle

Another significant signature of Jan Kath is influenced by the art of patchwork named BORO. In 17th century Japan, handwoven fabrics made of hemp and cotton had a long lifespan. Farmworkers would lovingly repair their kimonos, quilts, and trousers. Holes

were mended with fabric scraps, and the many layers were reinforced with a special stitching technique (Sashiko). While Boros were long worn with the shame of poor people's clothing, these textiles are now sought-after collector's items worldwide.



MAURO CHECKERBOARD DELUXE

gray
wool, silk, nettle

In the MAURO AND SPICE collection, the primary focus is on the materials themselves. Specifically, highlighting the undyed Nepalese nettle, a fiber that has been utilized for centuries in Himalayan textile production. In these designs, Jan Kath seamlessly inte-

grates this nettle with lustrous silk and natural Tibetan highland wool. The MAURO AND SPICE collection weaves a unique and engaging story, delicately merging these different materials to enrich its depth and character.

MAURO AND SPICE



**BOCHUM,
KATHMANDU,
PARIS,
NEW YORK
AND
MAYBE NEXT DOOR**

**FIND THE CLOSEST LOCATION AT
WWW.JAN-KATH.COM**

OR



CAFÉ CHITRA

**JAN KATH
RUG + ART
SPACE
KATHMANDU**

**JAN KATH DESIGN GMBH HEADQUARTERS
JAN KATH SHOWROOM BOCHUM GERMANY**

FRIEDERIKASTRASSE 148
44789 BOCHUM
GERMANY
T: +49 (0) 234 94 123 44

INFO@JAN-KATH.COM

PRESS CONTACT

GABY HERZOG
GABYHERZOG@JAN-KATH.COM

INFO & PHOTO-DOWNLOAD

WWW.JAN-KATH.COM

FOLLOW US ON INSTAGRAM



